

CURVES IN EXPLICIT CARTESIAN COORDINATES

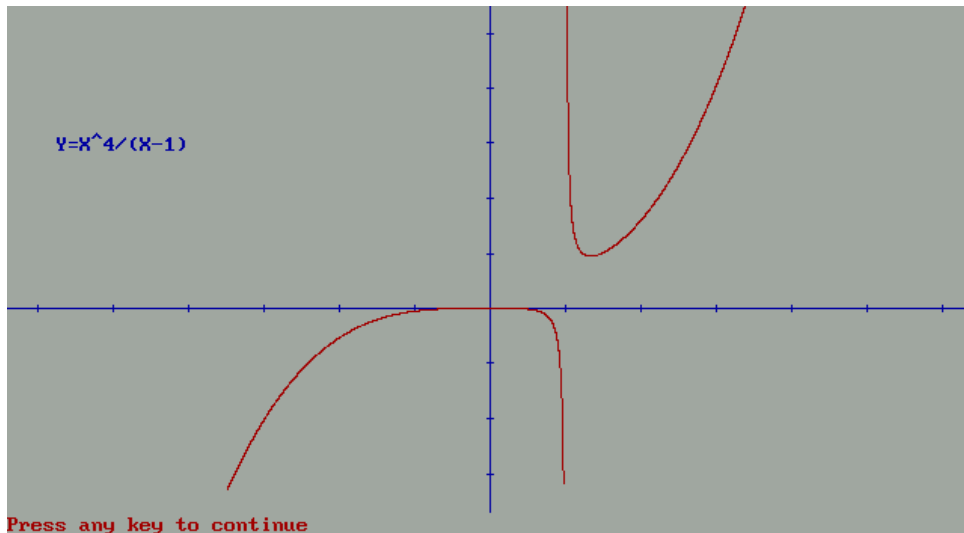


Fig. 1

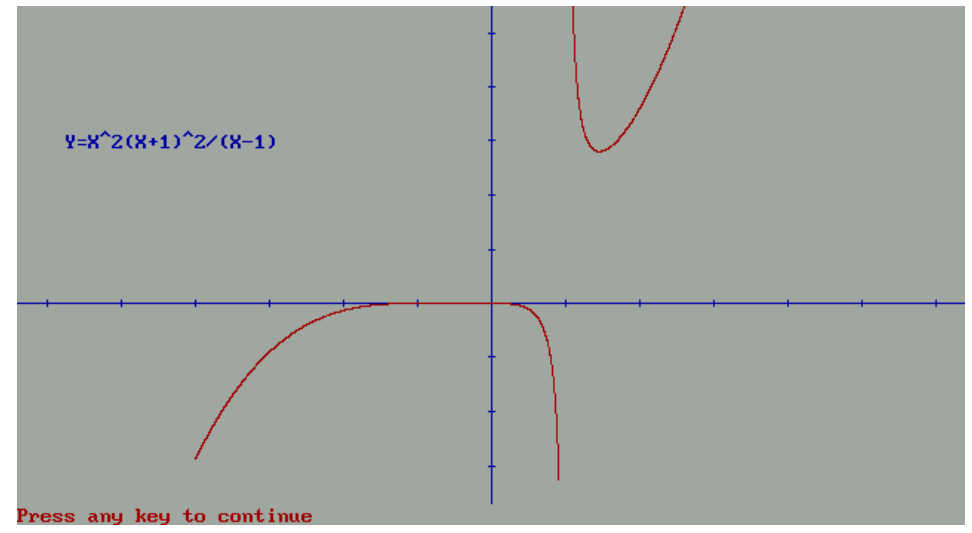


Fig. 2

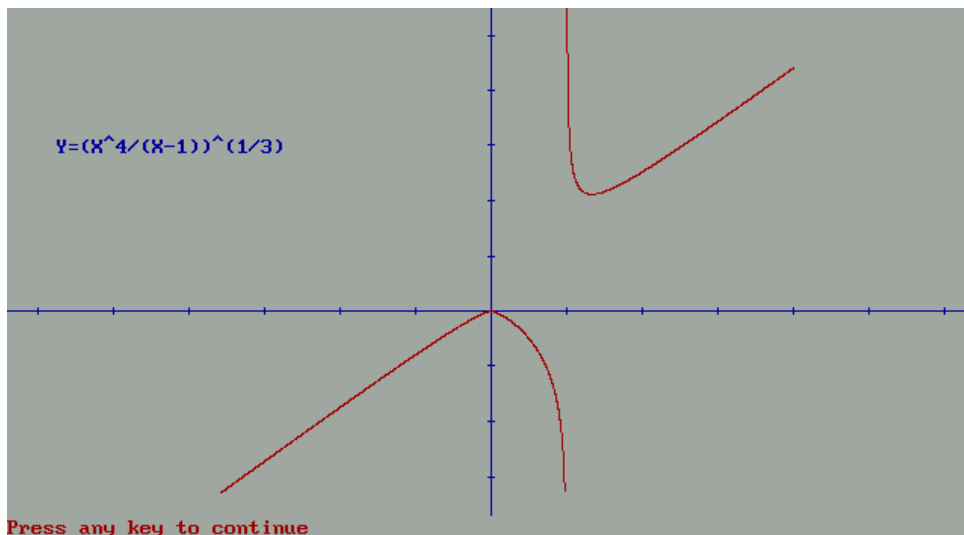


Fig. 3

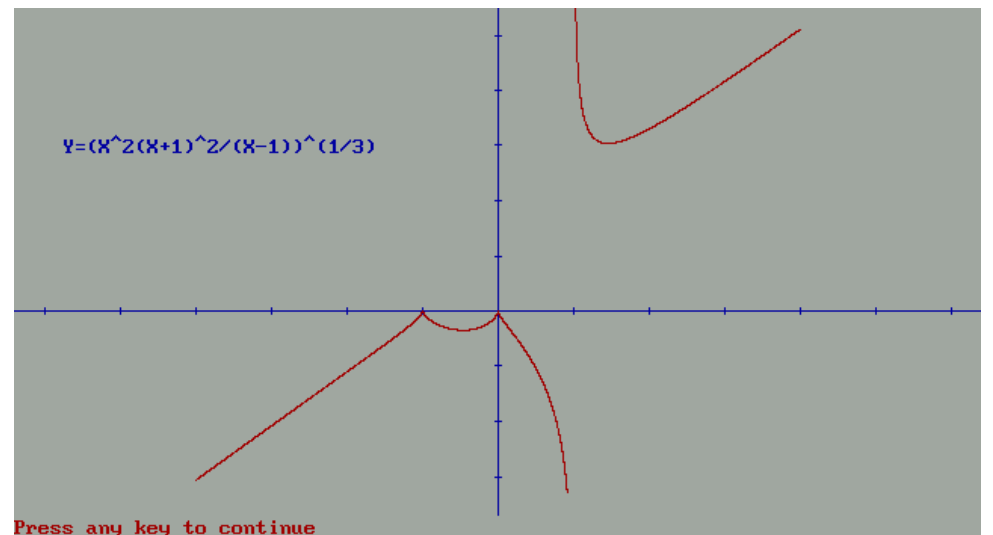


Fig. 4

CURVES IN PARAMETRIC COORDINATES 1

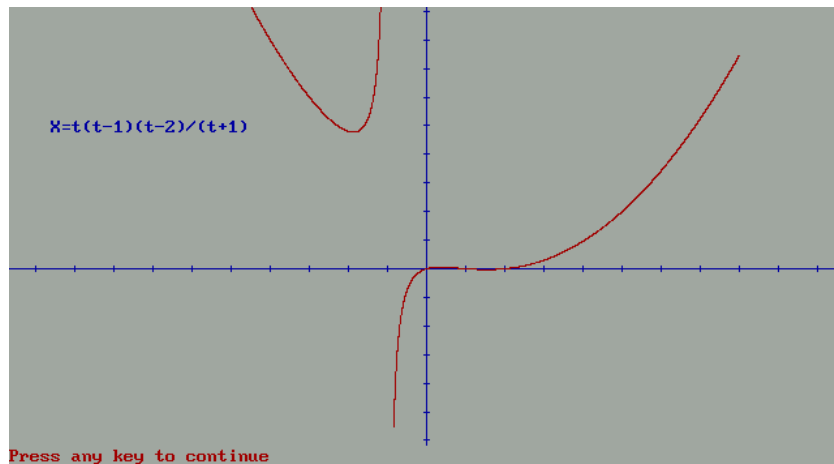


Fig. 5a

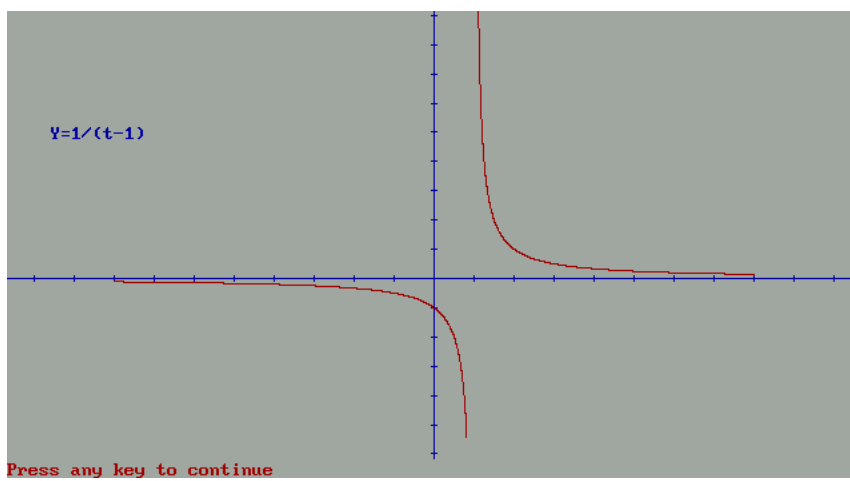


Fig. 5b

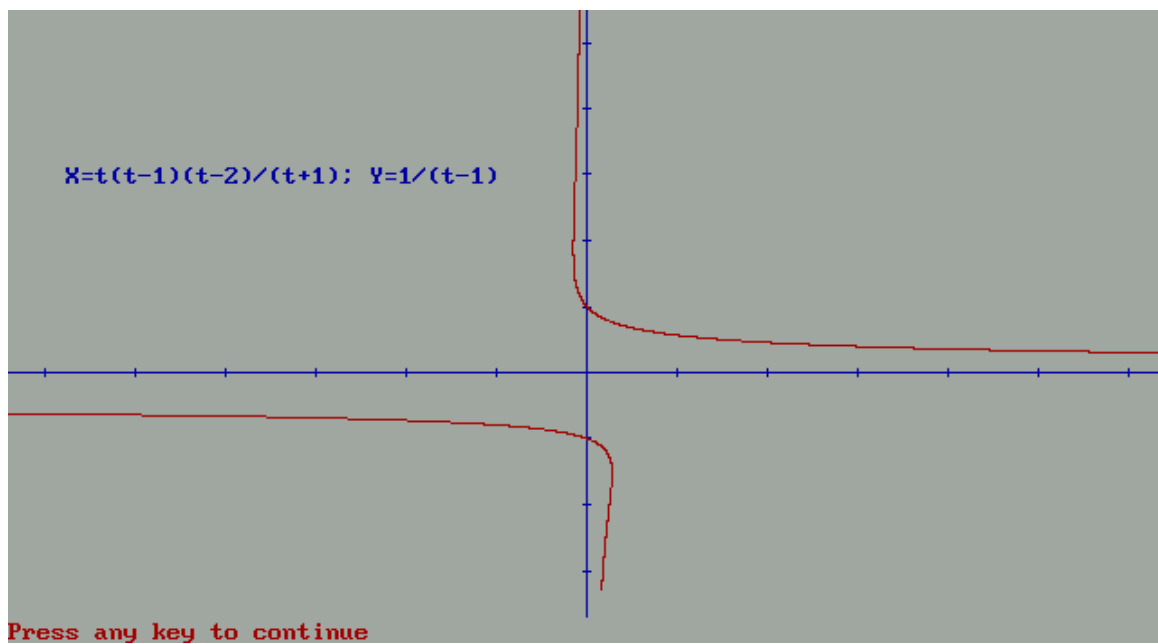


Fig. 5c

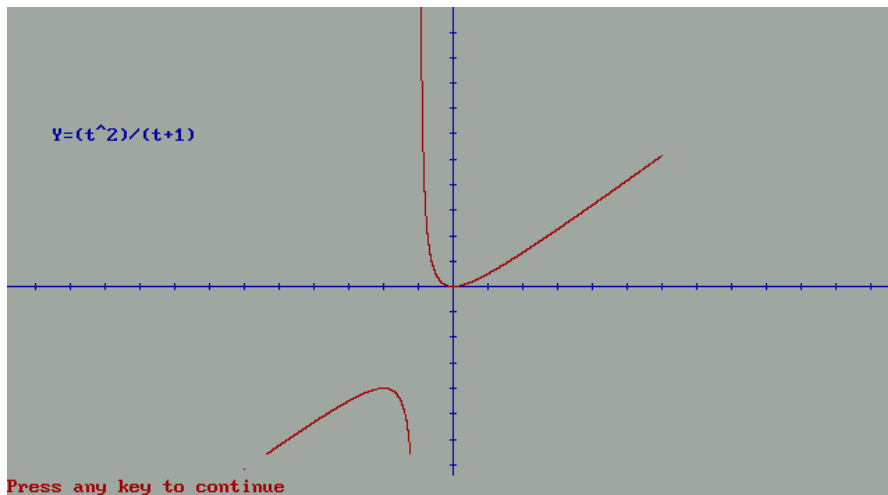


Fig. 6a

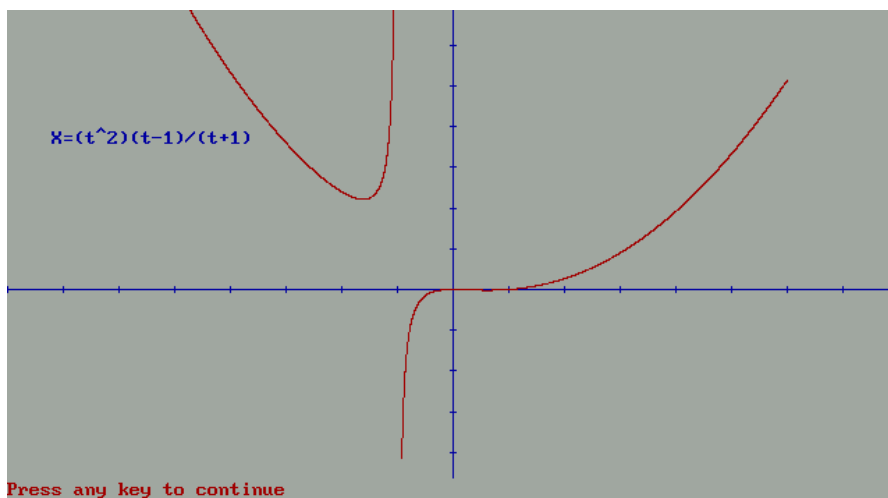


Fig 6b

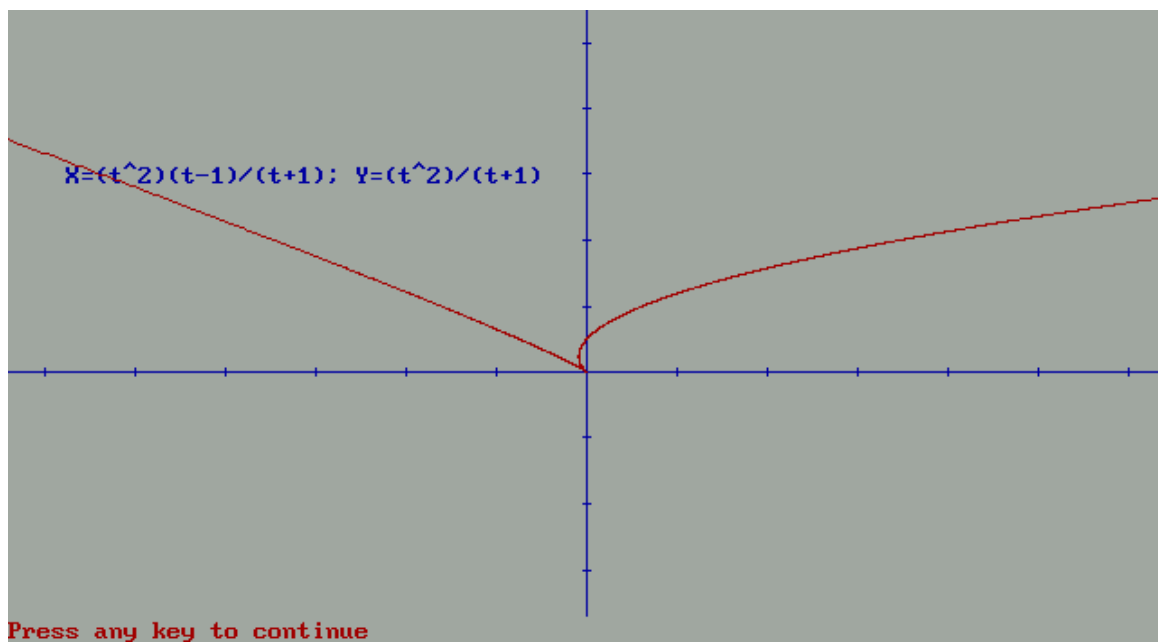


Fig.6c

CURVES IN PARAMETRIC COORDINATES 2

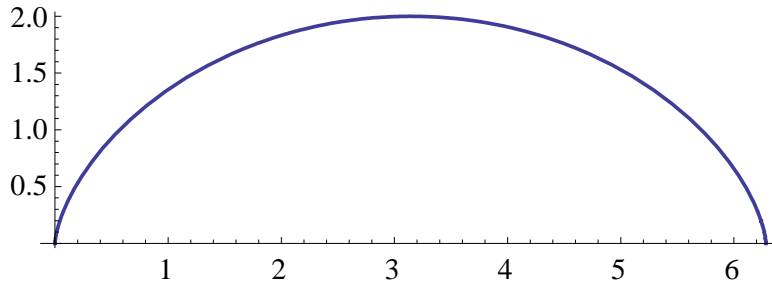


Fig 7. Cycloid.

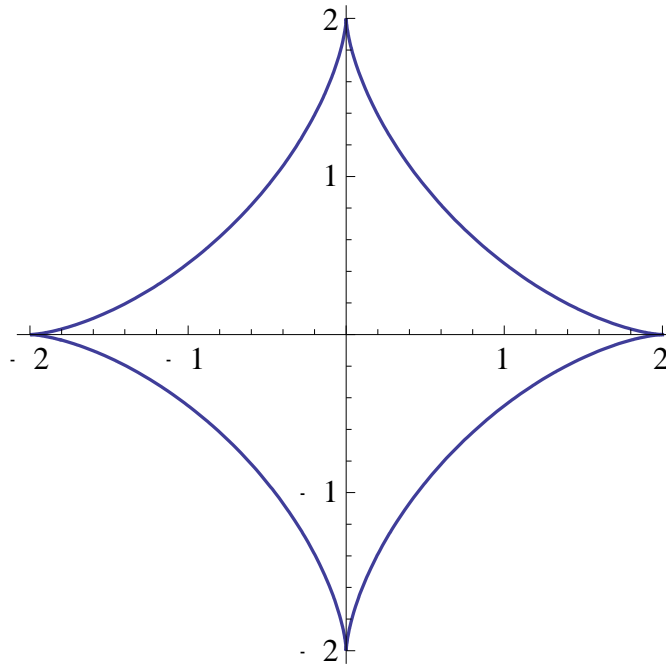


Fig 8. Astroid.

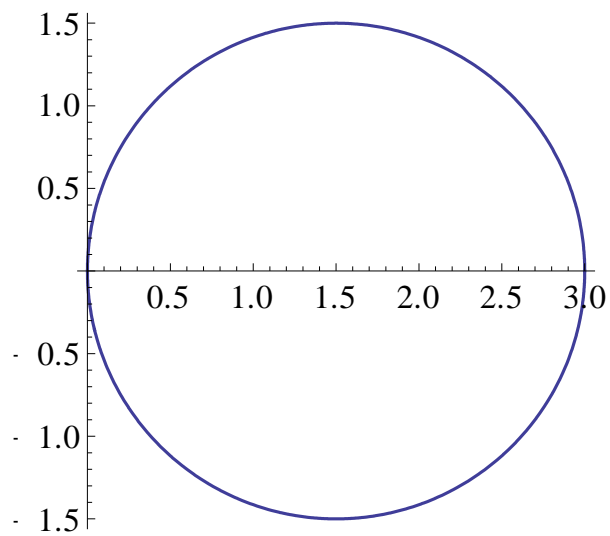


Fig 9. Circumference.

CURVES IN POLAR COORDINATES

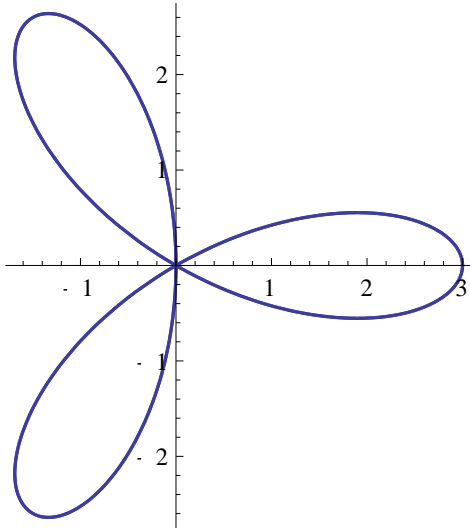


Fig. 10. Three petal rose: $\rho = 3 \cos 3\theta$

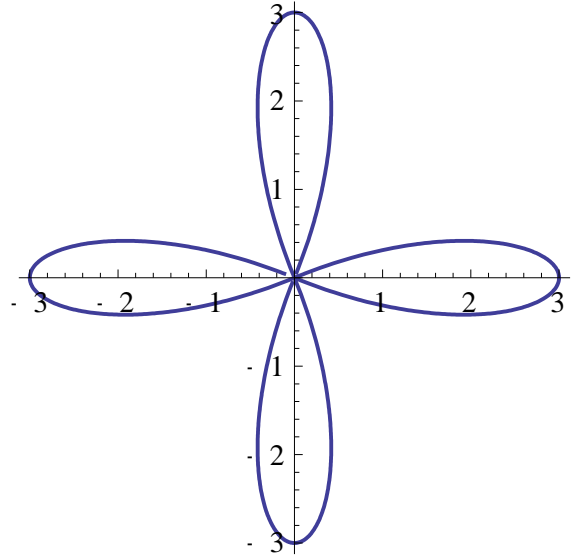


Fig. 11. Four petal rose: $\rho = 3 \cos 4\theta$

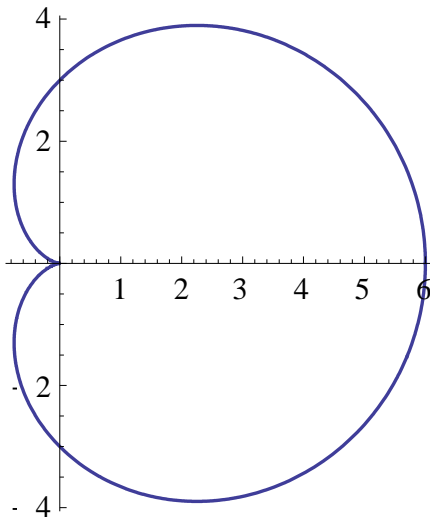


Fig. 12. Cardioid: $\rho = 3(1 + \cos \theta)$

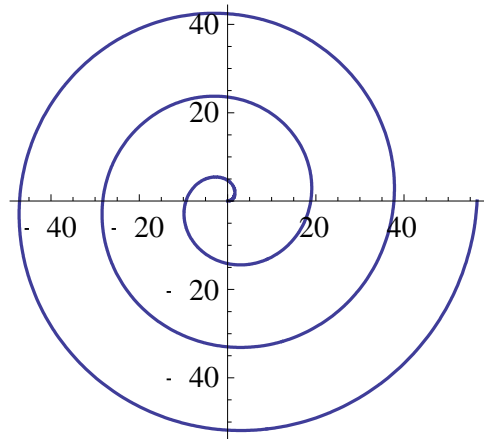


Fig. 13. Archimedean spiral: $\rho = 3\theta$

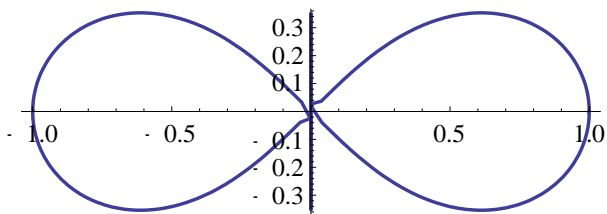


Fig. 14. Lemniscate of Bernoulli: $\rho^2 = \cos 2\theta$

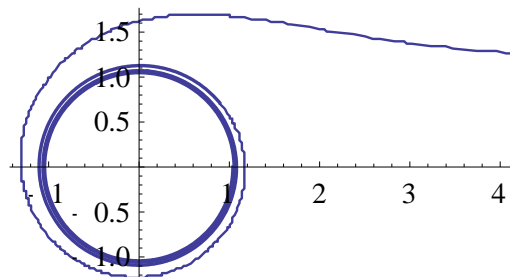


Fig. 15. Asymptotic circle: $\rho = 1 + 1/\theta$